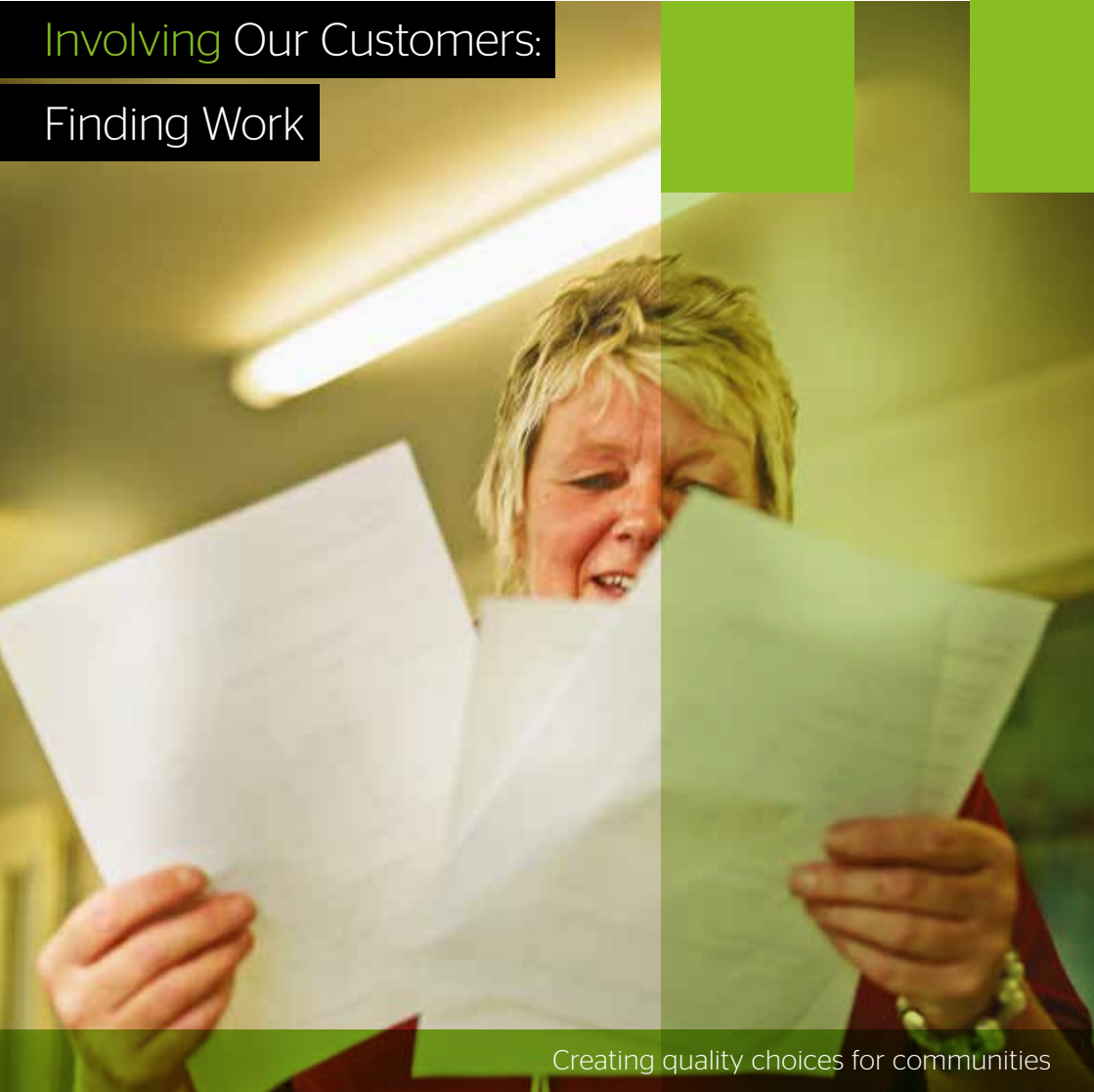




herefordshire housing

>People >Homes >Communities

# Involving Our Customers: Finding Work



Creating quality choices for communities

# friendly

forward



## Finding Work

If you're currently unemployed and seeking work we can help support you in the finding a job that's right for you. We understand how hard it can be to find yourself out of work and the difficulties of navigating benefits for the first time or under the new systems.

Breaking into the world of work can be especially difficult for young people or those who have been out of work for some time. Our aim is to assist you into finding lasting employment through support that is tailored to you. Whether you are looking to update your skills, experience different work placements or need support to job search or apply online, we have the solutions you may be looking for.

We all have different barriers that may prevent us moving into employment. HHL now offers specialist support services which can help you to overcome those barriers and move forward.

For more information  
contact us on 0300 777 4321



## Employment Skills Training

We offer a range of different courses and training experiences which can help you into work. Our class sizes are small and our learning environments are relaxed fun and friendly. Whether it's 1:1 tuition or as part of group you can move at your own pace with tutors and volunteers who will help you achieve your potential. We offer vocational accredited and non accredited courses as well as opportunities to further your personal development. If you're currently in work and would like the chance to develop your skills further then you're more than welcome to attend and we have opportunities for NVQ's and other in work support.

The types of courses and training opportunities we offer are:

- Literacy and Numeracy
- Basic IT Skills
- CV writing
- Confidence and Aspiration Building
- Pre work courses
- Pre apprenticeship courses
- NVQ 's in Business Innovation Techniques
- NVQ's in Customer Care
- First Aid
- Basic Health and Hygiene

## The Learning Box @Brierley Court

The Learning Box is a brand new resource centre dedicated to offering our community access to digital resources and training.

At The Learning Box, located at Brierley Court, we can help you to take the next steps in your employment journey.

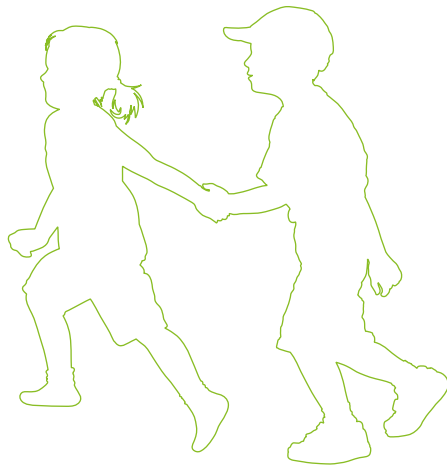
The centre has Total Wellbeing at its core and will be open to customers and the public alike through drop in sessions, so that the facilities can be accessed when it suits you.

At the centre you will be able to:

- Take the next steps back into employment
- Develop your own career path
- Access training and digital equipment
- Take part in personal and social development activities
- Drop in to access the resources when it suits you

There will be a range of different courses and programmes available to you throughout the year.

For more information  
contact us on 0300 777 4321



## Job Club

As part of our Back to Work support, we have dedicated job clubs on Tuesday, Wednesday and Thursday at Hinton Community Centre.

Applying for jobs can be a minefield. With most employers now using online applications, recruitment sites and agencies, access to a computer and the knowledge to use it is essential. Support is available through colleagues and volunteers who can help get you online, help you complete applications, help you to register and search using universal job match and research potential employers.

We can also signpost you to further courses, work placements or volunteering opportunities.

Job Club is a fun and friendly environment, it's voluntary and operates on a drop in basis. Being unemployed can be lonely and isolating, sometimes it's easy to think that you are on your own or you're doing something wrong. By coming along to Job Club you can meet up with others in the same situation and swap stories and tips with others in a mutually supportive environment. Most people who come along tell us that this is one of the most important things they gain from Job Club.

If you come along, we'll even cook you lunch for a small donation!

- Free IT Access and phone calls
- CV writing
- Job searches
- Support with applications
- Support, help and advice
- Career Planning
- Work Placements/Experiences
- Budget Busters Cookery Club

If you require this information leaflet in Braille,  
large print or audio format please call

**0300 777 4321**

Minicom users please call: **(01432) 378 487**

Versions in other languages 

### Polish

Ta informacja jest na temat bycia zaangażowanym w Twoje usługi mieszkaniowe. Jeśli chciałbyś otrzymać tę informację przetłumaczoną, prosimy zadzwonić pod numer telefonu 0300 777 4321.

### Russian

Эта информация о вашем вовлечении в процесс предоставления жилищных услуг. Если вам нужен перевод этой информации, пожалуйста, звоните 0300 777 4321.

### Portuguese

Estas informações referem-se à possibilidade de participar nos nossos serviços de alojamento. Se desejar receber estas informações traduzidas, é favor telefonar para o número 0300 777 4321.

### Lithuanian

Tai informacija apie tai, kaip dalyvauti mūsų aprūpinimo būstu paslaugų programoje. Jei norėtumėte gauti šios informacijos vertimą, prašom skambinti telefonu 0300 777 4321.

Stay informed. Follow us on:   



# herefordshire housing

> People > Homes > Communities



## Head Office

> Herefordshire Housing Ltd, Legion Way, Hereford HR1 1LN  
> Telephone 0300 777 4321 > Fax 01432 384198  
> Email [info@hhl.org.uk](mailto:info@hhl.org.uk) > Website [www.hhl.org.uk](http://www.hhl.org.uk)